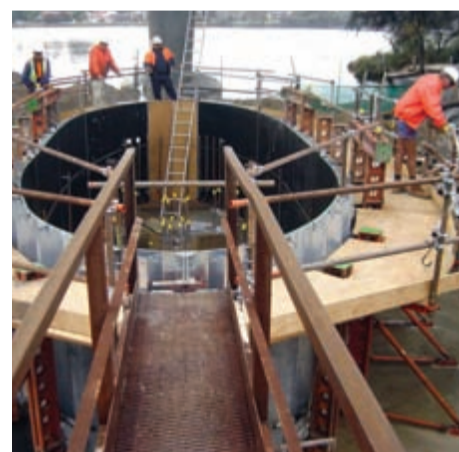


REFLEX

- curved walls the easy way

- Reflex is an excellent solution for the cost effective forming of concrete curved walls.
- Its uniquely designed, pre-assembled, adjustable panel meets the market's demand for labour-efficient solutions by improving on-site productivity.
- Reflex's access platforms and guard-rails provide a safe and secure working platform during site operations.
- Unlike traditional methods for constructing curved walls, Reflex is not labour intensive because it can be easily adjusted for re-use on site after site without any need for dismantling.
- Reflex can be used for diverse projects including: circular feature walls, water storage tanks, waste water treatment tanks, pump wells, caissons and much more.
- Panels are fixed with Reflex Clamps which eliminate the more time consuming use of nut and bolt connectors.
- Its galvanised finish helps to eliminate corrosion, minimises maintenance and extends the life of the system
- The high-grade form ply face on Reflex produces a good quality concrete finish.
- Reflex's steel frame means it is very strong, withstanding concrete pressures up to 60kN/m².
- Reflex panels can be combined for high pours and can be used in a climbing configuration to cater for multi-pour structures.



Quality
Endorsed
Company
ISO 9001 Lic1205
SAI Global

RMD AUSTRALIA
Excellence in Formwork, Shoring & Scaffolding

Contact: RMD Australia 1800 111 763
Website: www.rmdaustralia.com.au

