



R·M·D

AUSTRALIA

REFLEX

people make the difference

RMD is a powerful team comprising the skills, experience and energy of over 1,900 men and women in 16 countries. Totally diverse in nationality, culture, language and background. Totally united in the pursuit of customer satisfaction.



reflex *curved walls the easy way*

Reflex is the latest in RMD Australia's range of wall formwork products – it's our solution for the cost effective forming of reinforced concrete curved walls. Its galvanised steel frame, high-grade form ply face, and innovative design features allow for the setting of all curves efficiently and accurately, producing high quality concrete finishes.

The strong and robust design of Reflex withstands concrete pressures up to 60 kN/m² and can easily be adjusted for re-use site after site, without dismantling, for all curves above 2500mm radius.

Reflex is the result of over 50 years' experience gained on major projects throughout the world. Our local network of branches means when you deal with RMD Australia, you talk to people who understand the working environment, technical difficulties and challenges you face.



Client: Formtech Constructions
Project: Seaforth Apartments, Kings Beach, Caloundra, QLD



Client: L.D.I. Construction Pty Ltd
Project: Daintree Water Project, Daintree, QLD



Client: Paveways
Project: Bell Vista Residential Canal, Caloundra, QLD





Client:
Tweed Shire Council

Project:
West Pottsville Reservoir,
Pottsville, NSW

some applications for reflex

The versatility and ease of use of Reflex makes it highly cost effective for:

- Water / sewerage treatment works
- Flocculator tanks
- Pump wells
- Caissons
- Reservoirs
- Elevated tanks
- Circular stair wells
- Circular feature walls
- Large circular columns (min. diameter 500mm)
- Circular footings

Reflex panel units remain assembled between uses, eliminating lost items and improving on-site productivity.



Reflex panels can be adjusted to form parabolic curves and transition curves from one radius to another.



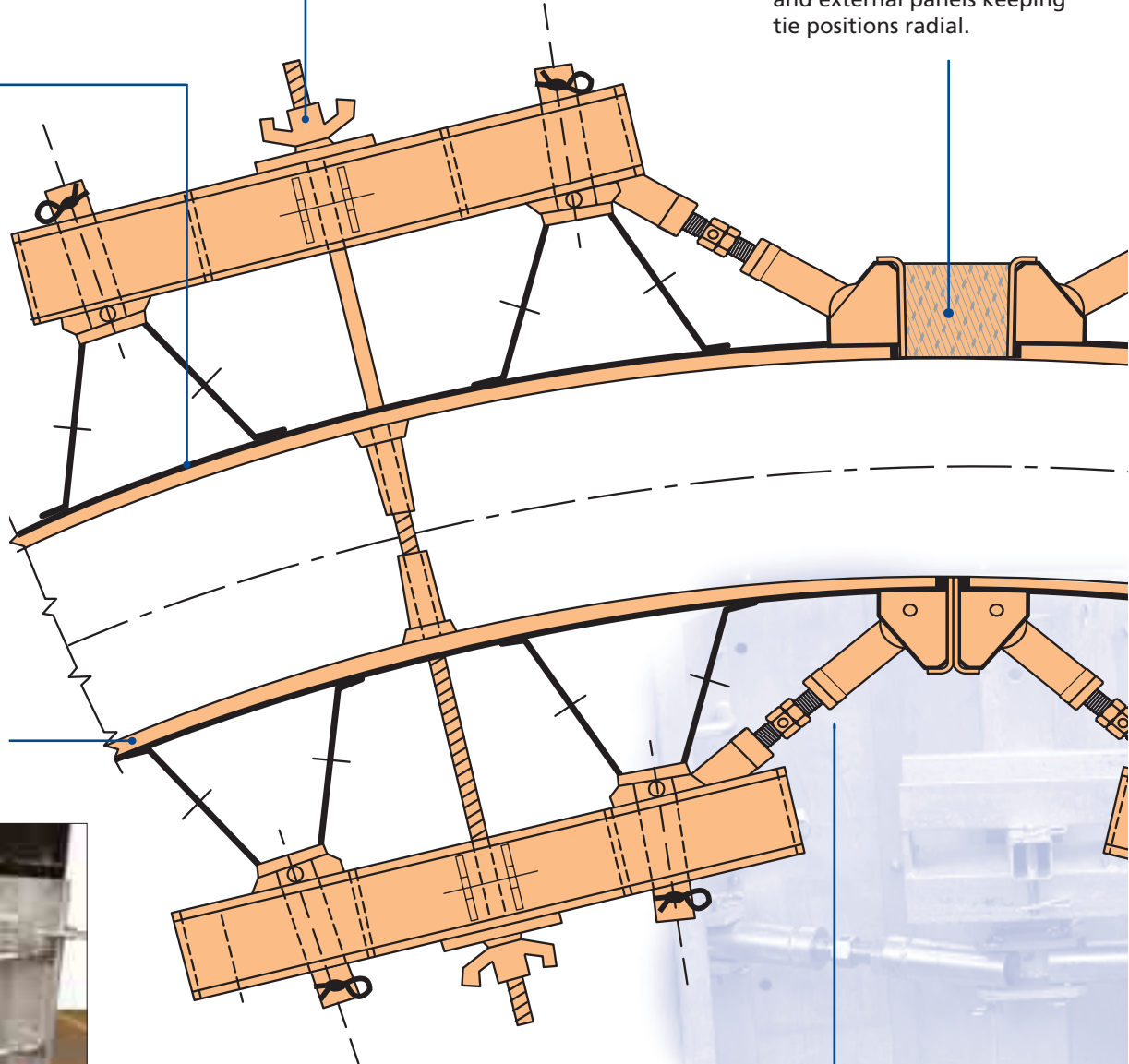


The internal and external panels are tied using 15mm diameter RMD Rapid Bar Tie System.



Timber infills align internal and external panels keeping tie positions radial.

The high grade form ply face on Reflex produces a high quality concrete finish.



Reflex is infinitely adjustable from a flat plane to a minimum radius of 2500mm.

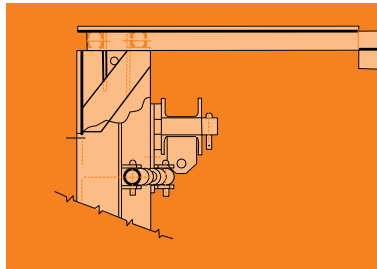


Robust turnbuckles enable accurate adjustment of panels to all curves.

Client:
Main Roads RTCS

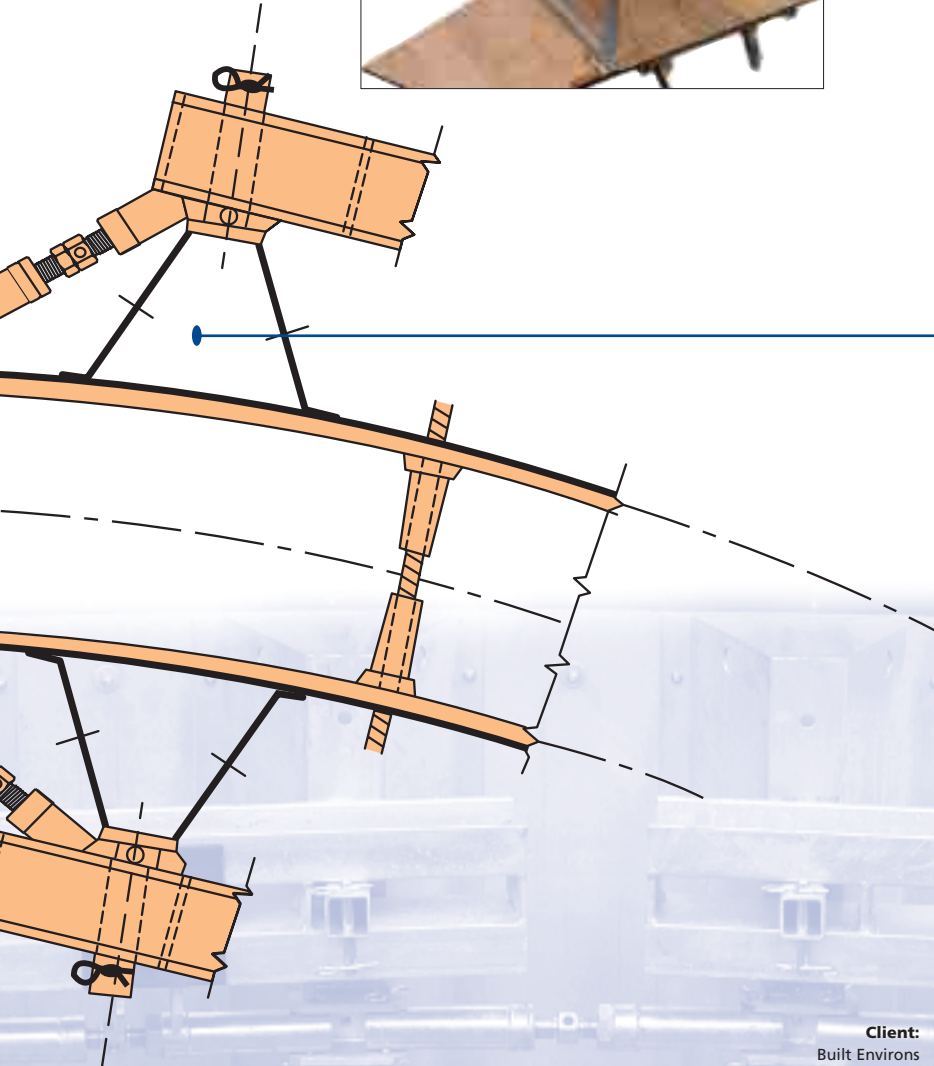
Project:
Monaco Street Bridge,
Gold Coast, QLD





Reflex's access platform and guard-rail provides a safe and secure working platform during site operations.

Large Reflex panels weigh 100 kg/m², enabling ganging of panels for crane handling.



Client:
Built Environs
Project:
Heathfield Waste Water
Treatment Plant

stment of



Reflex Dimensional Matrix (samples)

EXTERNAL PANELS 2200					INTERNAL PANELS 2075				
External Diameter mm	External Circumference	Quantity	End Infill	Panel Infill	WALL	Internal Diameter mm	Internal Circumference	Quantity Panels	Makeup Per Panel
50000	157080	71	955	0	300	49400	155195	71	97
40000	125664	57	339	0	300	39400	123779	57	89
30000	94248	42	1923	0	300	29400	92363	42	78
20000	62832	28	1307	0	300	19400	60947	28	54
15000	47124	21	999	0	300	14400	45239	21	30
10560	33175	15	0	0	300	9960	31290	15	0
10000	31416	14	261	18	300	9400	29531	14	0
7500	23562	10	734	74	300	6900	21677	10	0
5000	17279	7	780	104	250	5000	15708	7	0



Client:
Clough Downer RML Joint Venture

Project:
Mt Julian Reservoir,
Mackay, QLD

features and benefits

- Reflex is a pre-assembled, adjustable panel that uses robust turnbuckles so it can be easily and accurately adjusted for the setting of all curves.
- Reflex's steel frame means it is very strong, withstanding concrete pressures up to 60kN/m².
- Its galvanised finish eliminates corrosion, minimises maintenance and extends the lifetime integrity of the system.
- Reflex is easily adjusted for re-use at site after site without dismantling, which eliminates the risk of component loss and improves on-site productivity.
- Reflex has a high-grade form ply face which produces a high quality concrete finish.
- Reflex access platforms and guardrails provide a safe and secure working platform during site operations.
- Panels are fixed with Reflex clamps eliminating the use of nut and bolt connectors.
- Reflex panels can be adjusted to form parabolic curves and transition curves from one radius to another.



Panels are fixed with Reflex clamps eliminating the use of nut and bolt connectors.





Reflex panels are adjustable from a flat plane to a minimum radius of 2500mm.

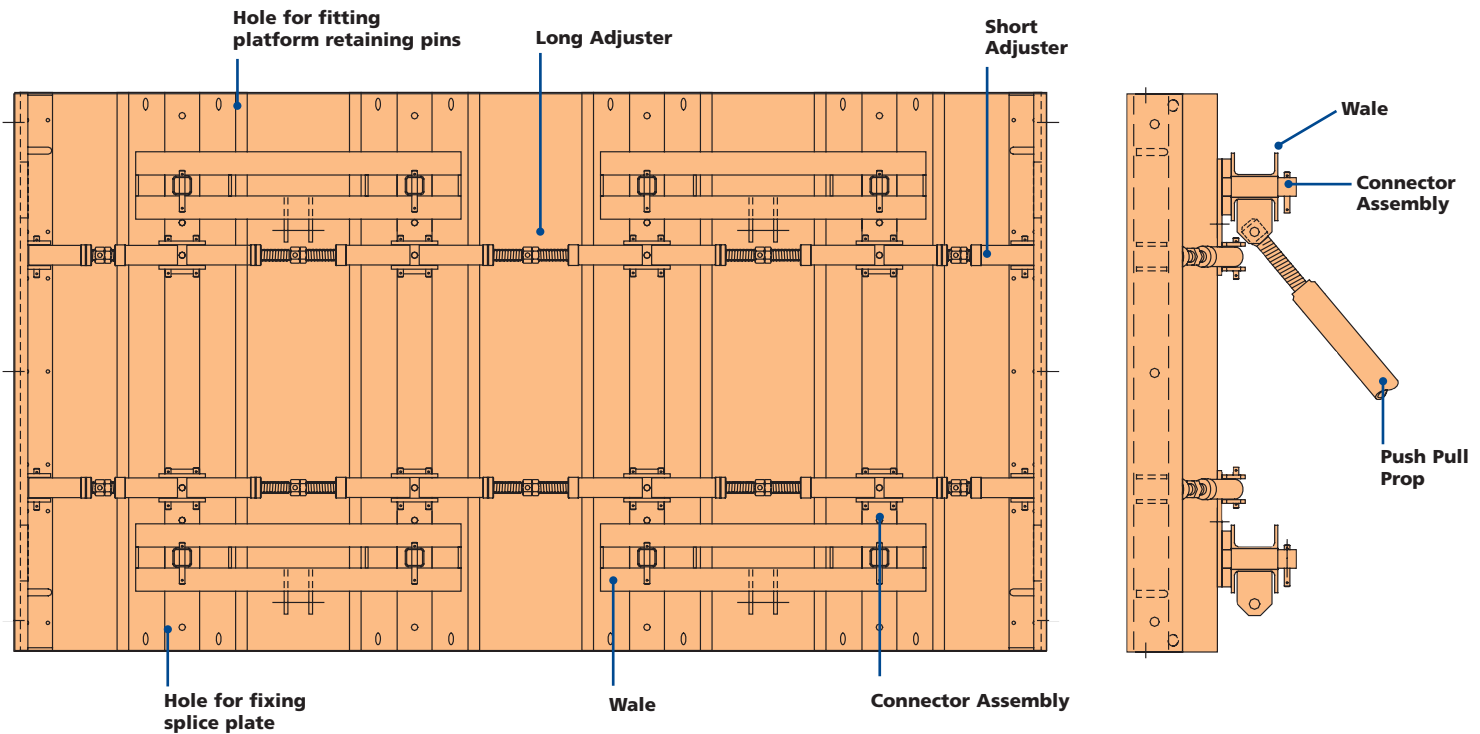
For radii of 5000mm and above, the external panels are connected together with Reflex clamps. The internal panels are set opposite the external panels allowing the same form ties holes to be used for any diameter.

The internal panels are spaced with timber infills and fixed with Reflex clamps.

For radii under 5000mm the internal panels are connected together with Reflex clamps and the external panels are spaced with timber infills and fixed with Reflex clamps.

Reflex panels can be combined for high pours and can be used as climbing forms for multi-pour structures. The forms are internally tied using 15mm Bar Tie system.

A short embedded Tie Bar, with Bar Tie steel cones, space the forms and are utilised as the form ties.



MAX CONCRETE PRESSURE 60kN/m²

PANEL ASSEMBLIES (Excluding Access)								
Height (mm)	EXTERNAL		INTERNAL			Height (mm)	INFILL	
	Width (mm)	Weight (kg)	Height (mm)	Width (mm)	Weight (kg)		Width (mm)	Weight (kg)
2400	2200	465	2400	2075	456	2400	600	185
1200	2200	295	1200	2075	290	1200	600	115

australian offices

RMD Australia

PO Box 169, 66 Bennet Avenue,
Melrose Park, South Australia, 5039.
Tel: +61 8 8179 8200

Fax: +61 8 8179 8201

E-mail: rmd.australia@rmdformwork.com

Adelaide Branch

66 Bennet Avenue, Melrose Park, SA 5039.
Tel: 08 8179 8240 Fax: 08 8179 8241
E-mail: rmd.adelaide@rmdformwork.com

Darwin Branch

3/32 Bishop Street, Stuart Park, NT 0820.
Tel: 08 8941 6777 Fax: 08 8942 2577
E-mail: rmd.darwin@rmdformwork.com

New South Wales

Sydney Regional Office

25-39 Chadderton Street,
Canley Vale, NSW 2166.
Tel: 02 8717 3700 Fax: 02 9728 6399
E-mail: rmd.sydney@rmdformwork.com

Newcastle Branch

3 Riverside Drive, Mayfield West, NSW 2304.
Tel: 02 4967 5888 Fax: 02 4967 5788
E-mail: rmd.newcastle@rmdformwork.com

Victoria/Tasmania

Melbourne Regional Office

Unit 5/80 Camp Road, Broadmeadows, VIC 3047.
Tel: 03 9359 9733 Fax: 03 9359 9761
E-mail: rmd.melbourne@rmdformwork.com

Hobart Branch

5 Lampton Ave, Derwent Park, TAS 7009.
Tel: 03 6272 2566 Fax: 03 6272 2611
E-mail: rmd.hobart@rmdformwork.com

Launceston Branch

9 Churchill Park Drive, Invermay, TAS 7248.
Tel: 03 6331 3751 Fax: 03 6331 9751
E-mail: rmd.launceston@rmdformwork.com

Queensland

Brisbane Regional Office

163 Crockford St, Northgate, QLD 4013.
Tel: 07 3266 3022 Fax: 07 3266 1054
E-mail: rmd.brisbane@rmdformwork.com

Maroochydore Branch

32 Page Street, Kunda Park, QLD 4556.
Tel: 07 5445 3244 Fax: 07 5445 4822
E-mail: rmd.maroochydore@rmdformwork.com

Bundaberg Branch

1 Turner Street, West Bundaberg, QLD 4670.
Tel: 07 4152 3899 Fax: 07 4152 7978
E-mail: rmd.bundaberg@rmdformwork.com

Rockhampton Branch

Cnr McLaughlin and Wade Street,
North Rockhampton, QLD 4701.
Tel: 07 4936 3955 Fax: 07 4936 3966
E-mail: rmd.rockhampton@rmdformwork.com

Gold Coast Branch

35 Leda Drive Andrews, QLD 4220.
Tel: 07 5520 2977 Fax: 07 5520 1744
E-mail: rmd.goldcoast@rmdformwork.com

Townsville Branch

11 Whitehouse Street, Garbutt, QLD 4814.
Tel: 07 4779 0544 Fax: 07 4725 1364
E-mail: rmd.townsville@rmdformwork.com

Cairns Branch

78-80 Ishmael Road, Earlville, QLD 4870.
Tel: 07 4054 5149 Fax: 07 4054 5198
E-mail: rmd.cairns@rmdformwork.com

Mackay Branch

Block 8D, Graeme Heggie Street,
Mackay, QLD 4740.
Tel: 07 4955 1228 Fax: 07 4955 3052
E-mail: rmd.mackay@rmdformwork.com

Western Australia

Perth Regional Office

6 Energy Street, Malaga, WA 6090.
Tel: 08 9248 5900 Fax: 08 9248 5800
E-mail: rmd.perth@rmdformwork.com

Naval Base Branch

43 Dooley Street, Naval Base, WA 6165.
Tel: 08 9410 2777 Fax: 08 9410 2779
E-mail: rmd.navalbase@rmdformwork.com

new zealand offices

RMD (New Zealand) Ltd.

PO Box 22-316, 101-105 Station Road,
Otahuhu, Auckland 6, New Zealand.
Tel: +64 9 276 5955
Fax: +64 9 276 6732
E-mail: rmd.auckland@rmdformwork.com

Christchurch Branch

1 Parkhouse Road, Sockburn, Christchurch.
Tel: +64 3 348 9621 Fax: +64 3 348 9682
E-mail: rmd.christchurch@rmdformwork.com

Wellington Branch

PO Box 13509, Johnsonville, Wellington.
Tel: +64 4 232 9300 Fax: +64 4 232 4144
E-mail: rmd.wellington@rmdformwork.com

europa offices

United Kingdom

Tel: +44 1922 743743
Fax: +44 1922 743400

Ireland

Tel: +353 1 8302500
Fax: +353 1 8302741

Spain

Tel: +34 91 5556104
Fax: +34 91 5554745

Portugal

Tel: +351 21 232 86 88
Fax: +351 21 231 57 15

Hong Kong

Tel: +852 2415 4882
Fax: +852 2413 4797

Korea

Tel: +82 2 545 2484
Fax: +82 2 545 1878

Philippines

Tel: +632 724 42 13
Fax: +632 724 42 14

middle east offices

UAE

Tel: +971 6 5534173
Fax: +971 6 5534327

Qatar

Tel: +974 600937
Fax: +974 606427

south america offices

Chile

Tel: +56 2 739 0610
Fax: +56 2 739 1246

Our policy is one of continuous improvement and we reserve the right to change, alter or modify any detail, design, weight, dimension or code without prior notice being given.

www.rmdaustralia.com.au

A member of Interserve Plc.

Brochure No. 3001 (Australian) - Reflex - Issued August 2007